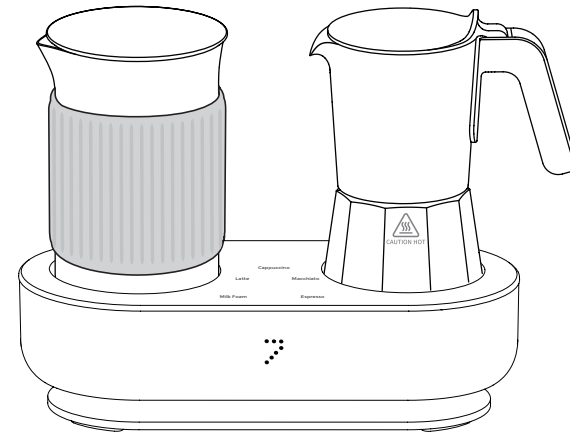
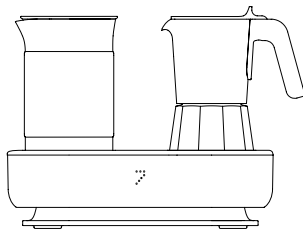




Moka Coffee Maker User Manual



www.sevenme.com
customercare@sevenme.com

Please read carefully before installing and operating the appliance

| | |
|--------------------------------|----|
| Important Safeguards..... | 1 |
| Specifications | 3 |
| Product Description | 3 |
| Instruction for Use | 6 |
| Cleaning and Maintenance | 10 |
| Troubleshooting..... | 12 |
| Disposal | 14 |

FOR HOUSEHOLD USE ONLY

IMPORTANT SAFEGUARDS

WHEN USING ELECTRICAL APPLIANCES, BASIC SAFETY PRECAUTIONS SHOULD ALWAYS BE FOLLOWED, INCLUDING THE FOLLOWING:

1. READ ALL INSTRUCTIONS.
2. KEEP THE PLUG CLEAN AT ALL TIMES. WIPE CLEAN WHEN THERE IS DUST ON THE PLUG IN ORDER TO AVOID HAZARDOUS DAMAGE.
3. ENSURE THAT THE APPLIANCE IS CONNECTED TO AN ELECTRICAL SYSTEM WITH A GROUNDED PLUG. THE ELECTRICAL SOCKET MUST BE EASILY ACCESSIBLE AND THE VOLTAGE OF THE POWER SOURCE MUST BE THE SAME AS THAT SPECIFIED ON THE RATING PLATE.
4. DO NOT ATTEMPT TO DISASSEMBLE OR MODIFY THE PRODUCT BY YOURSELF.
5. DO NOT PLACE FLAMMABLE MATERIALS AROUND THE PRODUCT OR ON THE HEATING BASE.
6. DO NOT PLACE ON OR NEAR A HOT GAS OR ELECTRIC BURNER, OR IN A HEATED OVEN.
7. NEVER TOUCH THE CORD OR THE PLUG WITH WET OR DAMP HANDS.
8. THIS PRODUCT IS UNSUITABLE FOR PEOPLE WITH PSYCHOLOGICAL, PHYSICAL OR SENSORY IMPAIRMENTS, UNLESS THEY ARE CLOSELY SUPERVISED BY SOMEONE RESPONSIBLE FOR THEIR SAFETY.
9. CLOSE SUPERVISION IS NECESSARY WHEN ANY APPLIANCE IS USED BY OR NEAR CHILDREN.
10. DO NOT OPERATE ANY APPLIANCE WITH A DAMAGED CORD OR PLUG OR AFTER THE APPLIANCE MALFUNCTIONS, OR HAS BEEN DAMAGED IN ANY MANNER. RETURN APPLIANCE TO THE NEAREST AUTHORIZED SERVICE FACILITY FOR EXAMINATION, REPAIR OR ADJUSTMENT.
11. THE USE OF ACCESSORY ATTACHMENTS NOT RECOMMENDED BY THE APPLIANCE MANUFACTURER MAY RESULT IN FIRE, ELECTRIC SHOCK OR INJURY.
12. DO NOT USE APPLIANCE FOR OTHER THAN INTENDED USE.
13. SCALDING MAY OCCUR IF THE LID IS REMOVED DURING THE BREWING CYCLES.
14. WARNING: TO AVOID THE RISK OF INJURY, DO NOT OPEN THE BOILER DURING THE BREWING PROCESS.
15. DO NOT USE OUTDOORS. USAGE IN OTHER CONDITIONS IS CONSIDERED IMPROPER AND, THEREFORE, DANGEROUS. TO PREVENT DAMAGE TO THE PRODUCT, AVOID USING IN THE FOLLOWING CONDITIONS:
 - A. UNDER DIRECT SUNLIGHT.
 - B. PLACES SUSCEPTIBLE TO RAPID TEMPERATURE CHANGES OR HUMIDITY.
 - C. NEAR EXCESSIVE DIRT, DUST OR OIL.

16. PLEASE DO NOT PLACE ANYTHING OTHER THAN MOKA POT AND MILK FROTHING POT ON THE HEATING PLATES.
17. THIS PRODUCT HAS BEEN MANUFACTURED TO MAKE COFFEE. PLEASE DO NOT USE OTHER EXTRACTS SUCH AS COCOA POWDER, TEA INFUSIONS OR OTHER SUBSTANCES IN MOKA POT, AS DOING SO CAN RESULT IN DAMAGE TO THE DEVICE.
18. ONLY USE OFFICIAL RECIPES AND INGREDIENTS RECOMMENDED IN THE INSTRUCTION MANUAL. PLEASE DO NOT USE THIS PRODUCT FOR MIXING OTHER FOODS.
19. PLEASE MAKE SURE THE MOKA POT IS TIGHTEN SECURELY BEFORE THE BREWING PROCESS.
20. PLEASE DO NOT COVER THE PRODUCT WITH ANYTHING DURING ITS OPERATION.
21. PLEASE DO NOT TOUCH HOT SURFACE DURING OR IMMEDIATELY AFTER ITS USE, AS DOING SO MAY RESULT IN INJURY OR BURNS. USE HANDLES OR KNOBS.
22. AFTER HEATING THE MOKA POT OR MILK FROTHING POT, PLEASE DO NOT IMMEDIATELY PLACE EITHER POT ON A SURFACE UNABLE TO ENDURE HIGH TEMPERATURES.
23. PLEASE DO NOT OPERATE THE PRODUCT WITH THE MOKA POT OR THE MILK FROTHING POT EMPTY, AS DOING SO MAY RESULT IN MALFUNCTION.
24. PLEASE DO NOT ADD WATER EXCEEDING THE SAFETY VALVE OF THE MOKA POT, OR IT MAY RESULT IN AN ACCIDENT OR DEVICE MALFUNCTION.
25. PLEASE DO NOT MOVE THE DEVICE WHILE IT IS RUNNING.
26. TO PROTECT AGAINST FIRE, ELECTRIC SHOCK AND INJURY TO PERSONS DO NOT IMMERSE CORD, PLUGS, OR THE HEATING BASE IN WATER OR OTHER LIQUID.
27. PLEASE BE AWARE THAT IT IS NORMAL THAT THE PRODUCT MAY PRODUCE A SMALL AMOUNT OF ODOR AND A SLIGHT AMOUNT OF SMOKE DURING ITS FIRST USE.
28. UNPLUG THE DEVICE BY PULLING THE FRONT END OF THE PLUG AND DO NOT DO SO BY PULLING ON THE ELECTRICAL CORD.
29. TO DISCONNECT, TURN THE MACHINE OFF, THEN REMOVE PLUG FROM WALL OUTLET.
30. UNPLUG THE DEVICE WHEN NOT IN USE OR BEFORE CLEANING. ALLOW TO COOL BEFORE PUTTING ON OR TAKING OFF PARTS, AND BEFORE CLEANING THE APPLIANCE.
31. DO NOT CONNECT THE POWER-CORD TO ANY SHARP OBJECTS, THE HEATING PLATES OF THE HEATING BASE, METAL PART OF THE MOKA POT OR THE MILK FROTHING POT IMMEDIATELY AFTER OR DURING HEATING.
32. PLACE THE MOKA POT AND THE MILK FROTHING POT ON THE CORRESPONDING HEATING PLATES, OR IT MAY RESULT IN PRODUCT MALFUNCTION.
33. PLEASE EXERCISE CAUTION WHEN REMOVING AND CLEANING THE FROTHING DISC IN THE MILK FROTHING POT.

SAVE THESE INSTRUCTIONS

SPECIFICATIONS

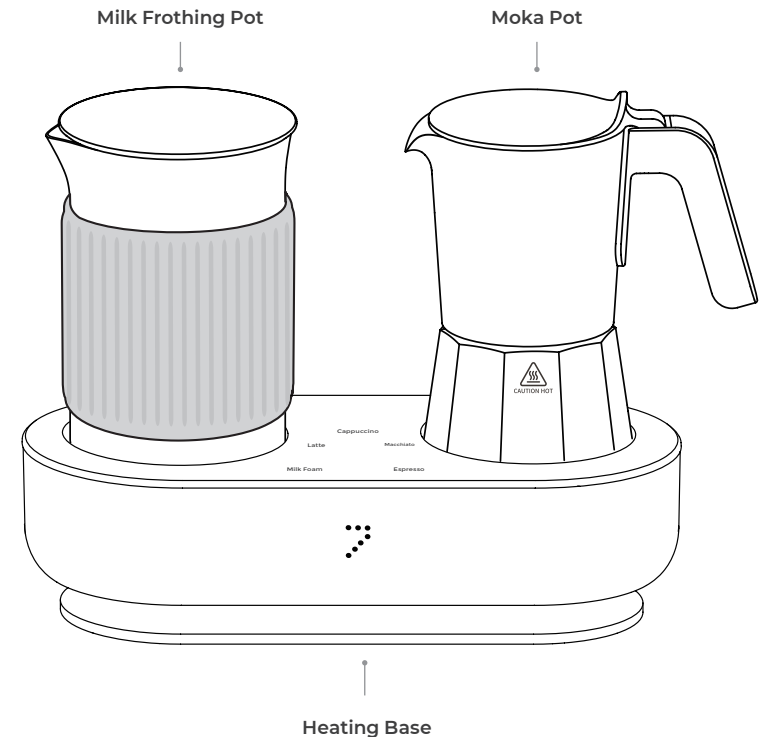
Product name: ☼ Moka Coffee Maker
 Model: CM161
 Rated voltage: 120V ~

Rated frequency: 60Hz
 Rated input power: 1300W

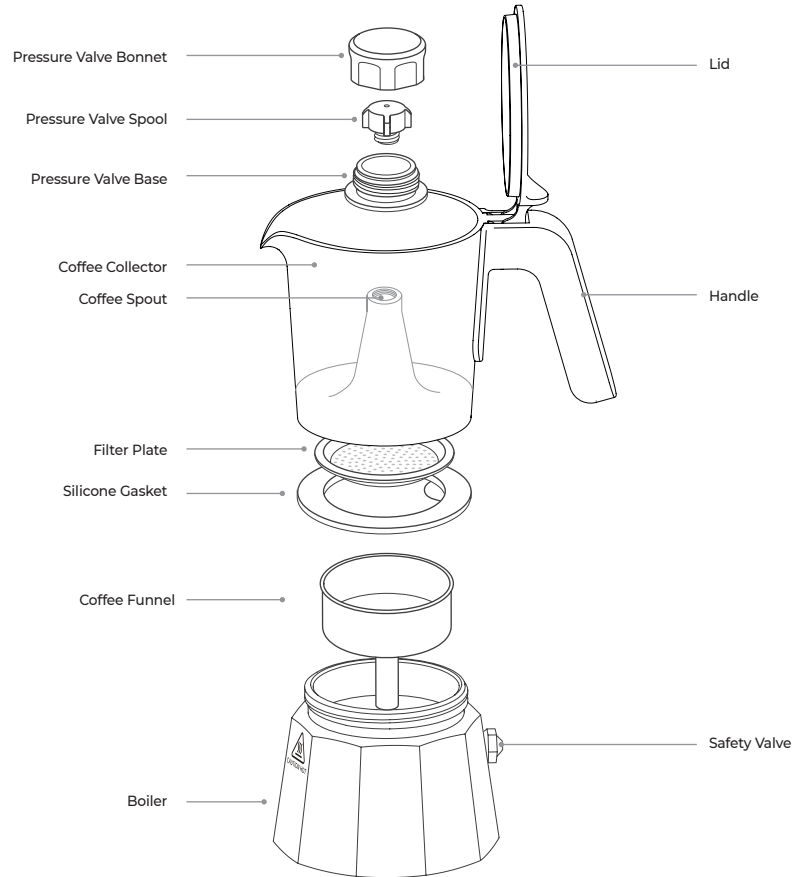
1. A short power-supply cord is provided to reduce risks resulting from becoming entangled in or tripping over a longer cord.
2. Longer extension cords are available and may be used if care is exercised in their use.
3. If a long extension cord is used:
 - a. The marked electrical rating of the detachable power-supply cord or extension cord should be at least as great as the electrical rating of the appliance;
 - b. If the appliance is of the grounded type, the extension cord should be a grounding-type 3-wire cord;
 - c. The longer cord should be arranged so that it will not drape over the counter top or table top where it can be pulled on by children or tripped over.

PRODUCT DESCRIPTION

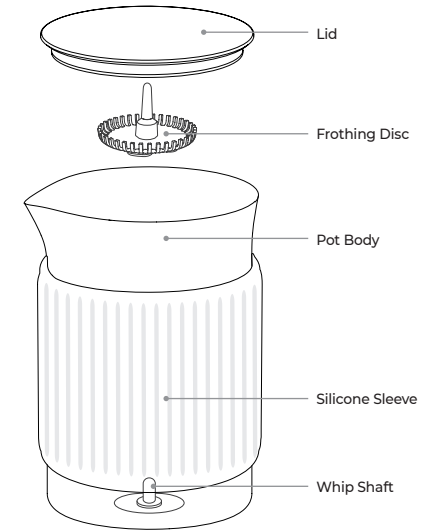
Please check to ensure the following parts are inside the box:
 Moka Pot, Milk Frothing Pot, Heating Base;
 "Quick start Guide", "Moka Coffee Maker User Manual".



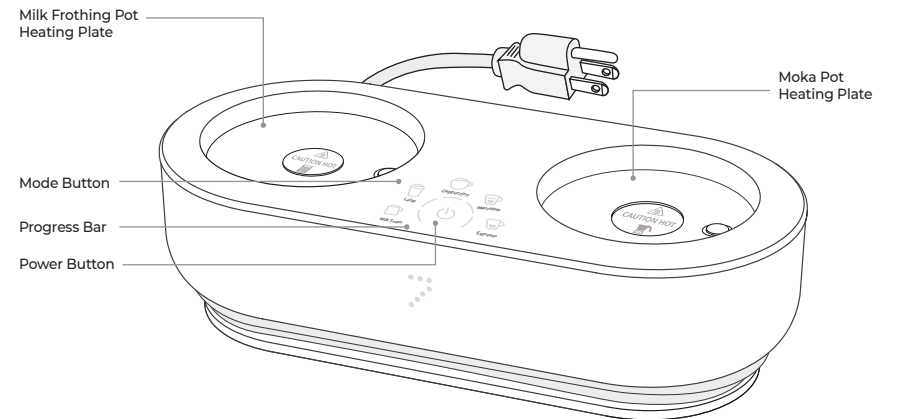
Moka Pot



Milk Frothing Pot



Heating Base

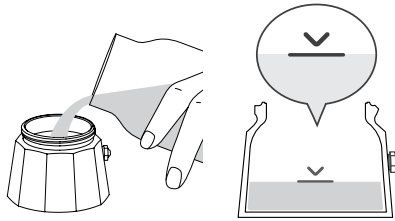


INSTRUCTION FOR USE

Remove all labels and packaging. Hand wash all parts with water. Make one pot of just water and then one of coffee to season the Moka Pot.

1. Assembling the Moka Pot

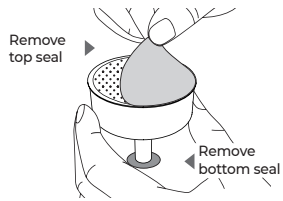
1



a. Unscrew the Moka Pot and add water in the boiler. Fill the boiler with cold water just below the safety valve. (Figure 1).

Attention
The water level must not exceed the safety valve.

1



Remove top seal

Remove bottom seal

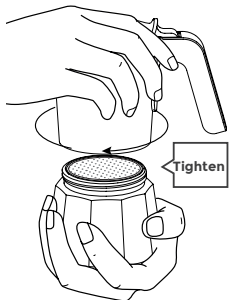
2



b. Remove the seal from the top and bottom ends of the coffee capsule (Figure 1). Then place the capsule on the boiler (Figure 2).

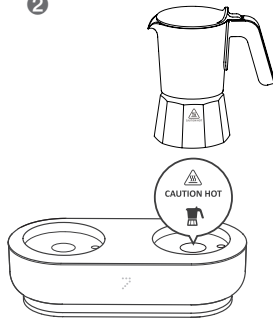
*If using a funnel, please refer to the method for funnel usage.

1



Tighten

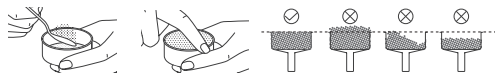
2



c. Firmly tighten the top and lower pots (Figure 1), and place the Moka Pot on the Heating Plate (Figure 2).

Attention:
- Ensure that there are no foreign objects at the bottom of the Moka Pot and on the Heating Plate (such as ground coffee) otherwise it may result in improper extraction of coffee.
- Make sure the Moka Pot is tightened securely.
- Ensure that the Safety Valve on the Moka Pot faces away from the user.

How to use the funnel

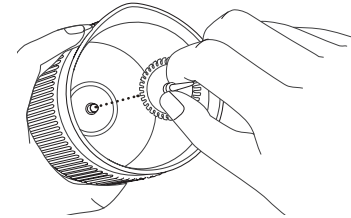


Fill the funnel with coffee ground without tamping. Remove any coffee grounds on the edge of the funnel.



Choose medium to fine grind coffee ground for best results.

2. Assembling the Milk Frothing Pot



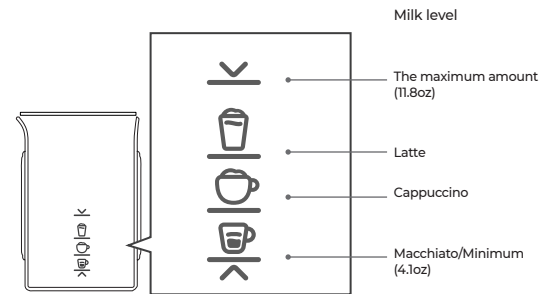
a. Install the Frothing Disc at the bottom of the milk frothing pot. Ensure it is rotatable.



b. Add the amount of milk in accordance with the beverage desired.

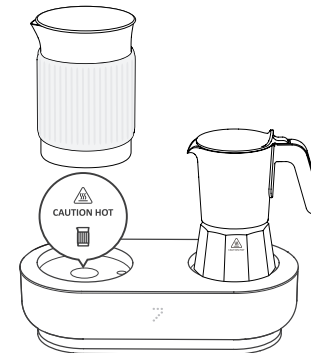
Attention:
The amount of whole milk used must be within the specified range.

Tip: It is recommended to use refrigerated whole milk.



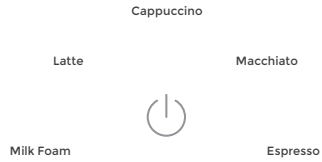
c. Place the Milk Frothing Pot on its corresponding Heating Plate (as indicated by its symbol).

Attention:
- Ensure that there are no foreign objects at the bottom of the Milk Frothing Pot and on the Heating Plate (such as ground coffee) otherwise it may result in improper functioning.
- Place the Moka Pot and Milk Frothing Pot on to their corresponding Heating Plate as placing them on incorrect Heating Plates may damage the device.



3. Start Brewing

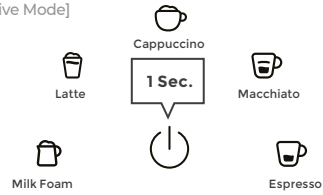
[Stand By Mode]



a. Plugging in

After plugging in the device into an electrical socket, the machine will beep and all buttons will simultaneously light up for half a second.

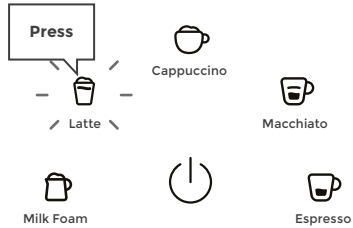
[Active Mode]



b. Activating the device

Press and hold the power button for 1 second to activate the device. All the buttons will light up before entering Active Mode.

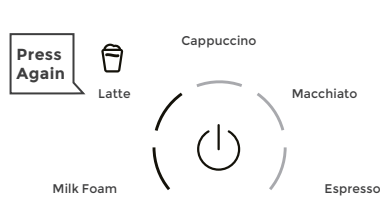
[Selection Mode]



c. Choosing the mode

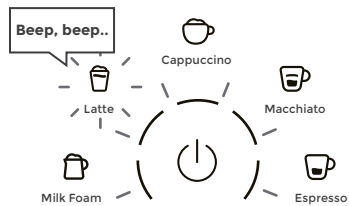
Press the button of the desired beverage to select mode. The selected button will continuously flash. (Press other beverage button to switch between different modes.)

[Selection Mode]



d. Confirming selection

Press the beverage button again to confirm. The button will remain lit whereas the other button lights will be deactivated. The progress bar will light up.
Cancel: To cancel the device while running, press and hold the power button for one second. The machine will cease operation and return to Active Mode.

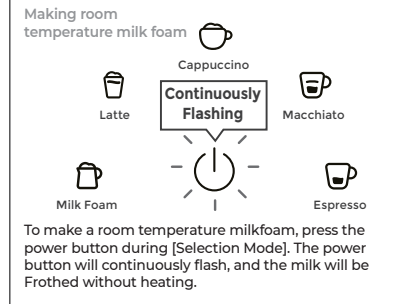


e. Finished

After around 3 minutes of beverage preparation, the progress bar and the selected button will flash 5 times accompanied by 5 beeps. The machine will then return to Active Mode.

ⓘ Attention:

- Do not lift any of the pots while the device is running, or the device will cease operation and enter Active Mode.
 - If it is desired to re-make a beverage after the Moka Pot has been removed from the heating base, please use a fresh set of ingredients.
 - If the coffee liquid cannot be extracted normally after the process is over, please refer to "Troubleshooting". DO NOT re-use ingredients.
- Tip: When the device emits a Beep sound, pour out the coffee immediately to avoid over extraction.



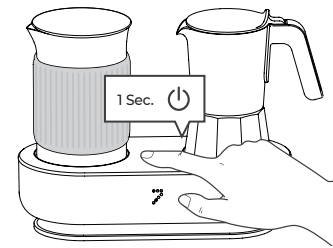
To make a room temperature milkfoam, press the power button during [Selection Mode]. The power button will continuously flash, and the milk will be Frothed without heating.

f. Preparing the beverage

| Beverage Type | Button | Instructions |
|---------------|--------|---|
| Espresso | | Pour the coffee into the cup and enjoy. |
| Americano | | Pour the coffee into the cup and add 250ml of hot/iced water. The amount of water can be adjusted according to your preferences. |
| Macchiato | | Pour the coffee into the cup and add 1 - 2 spoonfuls of milk froth on the top |
| Latte | | Pour the coffee into the cup, and then slowly pour the milk froth into the coffee to fully blend the two. |
| Cappuccino | | Tips: Before pouring the milk swirl and tap the Milk Frothing pot to mix the milk and foam well. |
| Milk Foam | | Get creative and make your own recipes. Please visit our website www.sevenme.com for an inspiration. |

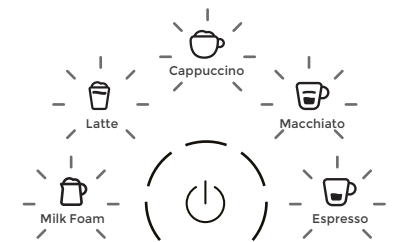
- The coffee capacity in the Moka Pot is approximately 60 ml. However, this may be affected by various factors such as using a different type of coffee powder. The output amount is for reference only. The results may vary.
- It is normal for crema to fade after a period of time.

[Warning Mode]



g. Switching off the device

Standby: When the device is in Active Mode, press and hold the power button for 1 second to enter Stand By Mode.
When the machine is in Active Mode for 30 seconds without any activity, it will automatically enter Stand By Mode.
Shut down: Unplug the device to turn off the machine if not intending to use it any further.



h. Overheating protection

When coffee is continuously made, there is a risk of overheating. In this case, the device will beep once and all 5 buttons will light up and flash continuously. To end the warning, press and hold the power button and allow the device to cool for two minutes before resuming use.

CLEANING AND MAINTENANCE

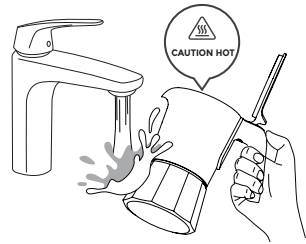
Attention

1. Do not use bleach or abrasive products to clean the device.
2. Do not wash in dishwasher.
3. Do not use sharp objects such as steel wool for cleaning.

Cleaning

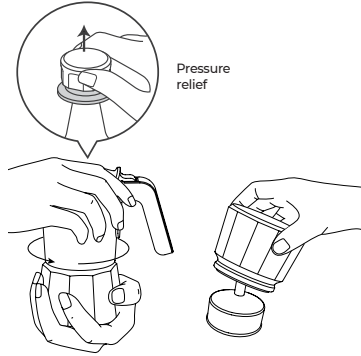
1. Cleaning the Moka Pot

①



a. Rinse under cold water for approximately 10 seconds after use to quickly lower the temperature. (Figure ①)

②

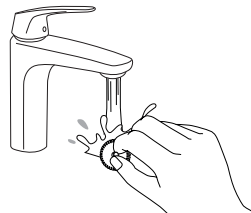
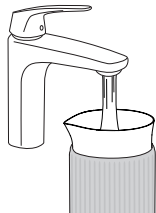


b. Lift the pressure valve to release the pressure, unscrew the Moka Pot, discard the coffee capsules (Figure ②). Wash thoroughly the upper and lower pots.

Tips:

- Ensure the upper and lower pots are dry before reassembling them again.

2. Cleaning the Milk Frothing Pot



Rinse with water after use.

Please rinse all parts, including the inner wall of the Milk Frothing Pot and the frothing disc to avoid milk residue. After rinsing, please put the disc back in place.

3. Cleaning the Heating Base

Ensure that the device is unplugged before cleaning. You can wipe the heating base clean with a damp cloth. DO NOT use any sharp tool to clean the heating base, DO NOT putting it in water or any other liquid.

Maintenance

1. Moka Pot and the Milk Frothing Pot should be dried properly before storage.
2. Store the machine in a cool, dry place.
3. If the Moka Pot or the Milk Frothing Pot is damaged and unable to be heated properly, please stop from using immediately and contact the after-sales service.
4. If the removable parts (such as funnel, filter, etc.) of the Moka Pot are damaged or deformed, please stop using immediately and contact the after-sales service.

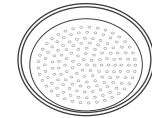
Regularly Disassemble Parts to Clean and Dry

①



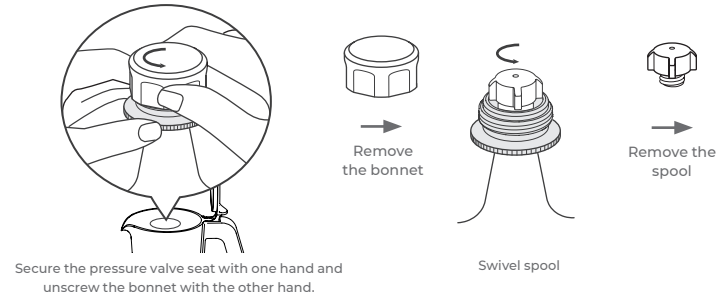
1. Remove the gasket and filter plate at the bottom of the Coffee Collector for cleaning. After cleaning and drying, install the parts correctly. Ensure the gasket and the filter is attached to the bottom of the Coffee Collector. (Figure ①)

②



2. Regularly check the filter plate (Figure ②) for any clogging and clean accordingly. If necessary, clean using a pin. If the funnel is used, clean with the same method.

③



3. Disassemble and clean three components of the pressure valve. After cleaning and drying, assemble them properly. (figure ③)

Consumables

The silicone ring at the bottom of the Coffee Collector is a consumable item. If deformed or damaged, it will affect the safety of the Moka Pot. It is recommended to replace the silicone ring regularly.

Any other servicing should be performed by an authorized service representative.

TROUBLESHOOTING

| Device Operation | | |
|--|---|---|
| Issue | Probable Cause(s) | Solution |
| 1. The interface buttons are off. | The device is not plugged in. | Check if the power is on. |
| 2. Moka Pot or Milk Frothing Pot is sizzling during use. | There is water present at the bottom of the Milk Frothing Pot or Moka Pot. | Check and make sure the bottom of the Moka Pot or Milk Frothing Pot are dry before use. |
| 3. The Moka Pot leaks air, water, or coffee at the connecting points during use. | There are some coffee powder remains on the edge of the coffee capsule or funnel. | Ensure that the edges of the coffee capsule or funnel are clean before use. |
| | The Moka Pot is not tightened securely. | Ensure the upper and lower pots are tightened securely before use. |
| | Aging of the silicone ring. | Replace the silicone ring. |
| | Funnel deformation. | Replace the funnel. |
| 4. The pressure valve leaks air or water. | The pressure valve spool hole is blocked. | After the Moka Pot has cooled down, inspect and clean the pressure valve spool hole. If the issue persists, please suspend use and contact after-sales service. |
| 5. Upon pressing the beverage button for a drink, all buttons flash 3 times simultaneously and then return to Active Mode. | The Moka Pot or Milk Frothing Pot are placed on to the incorrect Heating Plates. | Place the pots on their corresponding heating plates. |
| 6. The device stops suddenly during operation and the interface changes to Active Mode. | Moka Pot or Milk Frothing Pot in use has been removed from the heating plate. | Do not remove the Moka Pot or Milk Frothing Pot while it is running. If done so and desired to continue brewing process, please use a fresh set of ingredients. |
| 7. The device suddenly enters warning mode during use (beeps for a long time and all mode buttons continue to flash simultaneously). | Heating Plate temperature is too high. | Long-press the power button for the device to return to Active Mode. Let the device rest for approximately two minutes. |
| | The internal temperature control of the device is damaged. | Long-press the power button for the device to return to Active Mode. If the machine re-enters warning mode after cooling down, suspend use and contact the after-sales service. |
| 8. Moka Pot safety valve squeaks and releases pressure. | The pressure inside the Moka Pot is too high. | Once the pressure is relieved, replace the ingredients and re-make. If you still face problems, please contact customer service. |

| Coffee Status | | |
|--|---|--|
| Issue | Probable Cause(s) | Solution |
| 1. Moka Pot produces too little or too much coffee. | Broken non-woven filter inside coffee capsule. | Replace with new coffee capsules or contact customer service. |
| | Coffee capsule leaks and causes coffee powder to become wet. | |
| | Coffee capsule leaks due to deformation. | |
| | Coffee capsule has been reused. | |
| | Too little or too much water in boiler. | Add water to the scale of the boiler. |
| 2. Delivery of coffee is delayed. | When using the funnel, the ground coffee is not full, pressed too tightly or the ground coffee is too thin. | Check if you are using the fine-grind standard coffee. |
| | Foreign matter at the bottom of the Moka Pot or on the surface of the Heating Plate. | Inspect the bottom of the Moka Pot and the surface of the Heating Plate for any foreign matter before use. |
| | Moka Pot leaks. | Inspect and firmly screw the Moka Pot before use. |
| 3. No coffee comes out after the machine issues an end tone. | Too much water in the boiler. | Add water to the scale of the boiler |
| | Foreign matter at the bottom of the Moka Pot or on the surface of the Heating Plate. | Inspect the bottom of the Moka Pot and the surface of the Heating Plate for any foreign matter before use. |
| | No water or ground coffee in the coffee pot. | Remove the Moka Pot to check and add water or coffee powder after letting it fully cool down. |
| | The aluminum film on the top or bottom of the coffee capsule has not been removed. | Remove the sealed aluminum films from the top and bottom ends of the capsule. |
| | Coffee capsule leaks due to deformation. | Please replace with a new coffee capsule or contact customer service. |
| | Coffee capsule has been reused. | Do not re-use coffee capsules. Please replace all coffee capsules with unused ones. |
| | The Moka Pot is removed from its heating base while it's running. | Do not remove the Moka Pot while the device is in operation. If desired to re-make after the interruption, use a fresh set of ingredients. |
| | Moka Pot leaks, inadequate internal pressure. | Check and firmly screw the Moka Pot before use. |

| Coffee Capsule | | |
|--|--|----------------------------------|
| Issue | Probable Cause(s) | Solution |
| 1. The flat end of the coffee capsule is puffed up. | The coffee releases gas that builds up inside the coffee capsule. | Normal. No response required. |
| 2. Severe powder leakage from unopened coffee capsule. | Air leakage due to damage to the sealed aluminum film of coffee capsule. | Replace with new coffee capsule. |
| 3. After making coffee, the coffee capsules are slightly deformed. | Coffee capsules may sustain deformation due to the heat or pressure. | Normal. No response required. |

| Milk Frothing Pot | | |
|---|--|--|
| Issue | Probable Cause(s) | Solution |
| 1. The Milk Frothing Pot produces too little or poor quality milk foam. | The milk amount is not within the range specified. | Add milk within the specified range. |
| | Low fat content in the milk. | Use whole milk. |
| | Milk temperature is too high. | Use room temperature or refrigerated milk. |
| 2. The Milk Frothing Pot produces noise. | The frothing disc is not properly placed. | Place the frothing disc correctly. |
| 3. The Milk Froth wasn't heat up. | [Room Temperature Mode] was triggered by mistake. | Make sure the device is not on [Room Temperature Mode] |

If you have other questions, please contact Seven & Me for after-sale consultation.

Web: sevenme.com Email: customercare@sevenme.com

DISPOSAL



This product may not be treated as household waste. Instead it should be handed over to the applicable collection point for the recycling of electrical and electronic equipment or as designated officially by the manufacturer.